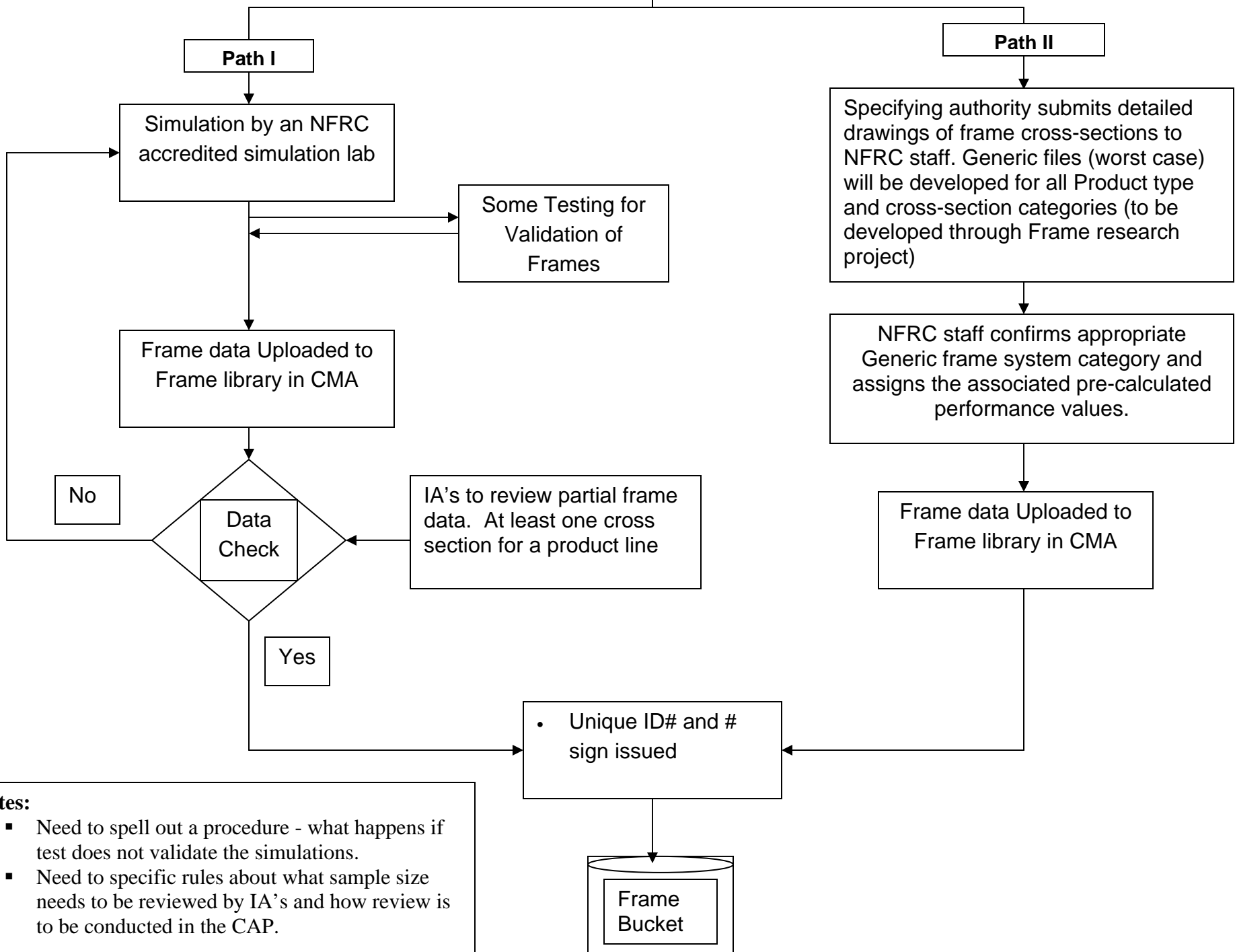


Date: 07-26-2006

Frame System



Notes:

- Need to spell out a procedure - what happens if test does not validate the simulations.
- Need to specific rules about what sample size needs to be reviewed by IA's and how review is to be conducted in the CAP.

Specifying Authority

ACE (independent)

ACE (Specifying Authority)

Rejections subject to compliance assurance policy and decertification of approved status. (Need to spell out the penalties.)

IA review of ACE calculation:

- 100% for first 5 submissions.
- 60% for next 7 submissions
- 40% for next 10 submissions
- 20% for next all submissions

Sample % only - final values to be decided

Label Certificate

Label Certificate

IA review of ACE calculation:

- 100% for first 5 submissions.
- 30% for next 10 submissions
- 10% for next all submissions

Documentation Trail Audit:
No more than -?-%. If consistent error impacting rating values is determined, would result in more audits.

Sample % only - final values to be decided

Documentation Trail Audit:
No more than -?-%. If consistent error impacting rating values is determined, would result in more audits.

***NFRC has right to review any Label Certificate issued to any Specifying Authority**