



National Fenestration Rating Council Incorporated

NFRC 300-2010

Test Method for
Determining the Solar Optical Properties
of Glazing Materials and Systems

© 2010 NATIONAL FENESTRATION RATING COUNCIL, INC.

PREPARED BY:

National Fenestration Rating Council
6305 Ivy Lane, Suite 140
Greenbelt, MD 20770-1465
Voice: (301) 589-1776
Fax: (301) 589-3884
Email: info@nfr.org
Website: www.nfr.org



FOREWORD

The National Fenestration Rating Council, Incorporated ("NFRC") has developed and operates a uniform rating system for energy and energy-related performance of fenestration products. The Rating System determines the U-factor, Solar Heat Gain Coefficient (SHGC), and Visible Transmittance (VT) of a product, which are mandatory ratings for labeling NFRC certified products and are mandatory ratings for inclusion on label certificates, and are supplemented by procedures for voluntary ratings of products for Air Leakage (AL), and Condensation Resistance. Together, these rating procedures, as set forth in documents published by NFRC, are known as the NFRC Rating System.

The Rating System employs computer simulation and physical testing by NFRC-accredited laboratories to establish energy and related performance ratings for fenestration product types. The Rating System is reinforced by a certification program under which NFRC-licensed responsible parties claiming NFRC product certification shall label and certify fenestration products to indicate those energy and related performance ratings, provided the ratings are authorized for certification by an NFRC-licensed certification and Inspection Agency (IA).

The requirements of the rating, certification, and labeling program (the "Certification Program") are set forth in the most recent versions of the following as amended, updated or interpreted from time to time:

- NFRC 700 Product Certification Program (the "PCP")
- NFRC 705 Component Modeling Approach ("CMA") Product Certification Program (the "CMA-PCP").

Through the Certification Programs and the most recent versions of its companion programs as amended, updated or interpreted from time to time:

- The laboratory accreditation program (the "Accreditation Program"), set forth in the NFRC 701 Laboratory Accreditation Program (the "LAP")
- The IA licensing program (the "IA Program"), set forth in NFRC 702 Certification Agency Program (the "CAP")
- The CMA Approved Calculation Entity ("ACE") licensing program (the "ACE Program") as set forth in the NFRC 708 Calculation Entity Approval Program (the "CEAP"),

NFRC intends to ensure the integrity and uniformity of NFRC ratings, certification, and labeling by ensuring that responsible parties, testing and simulation laboratories, and IAs adhere to strict NFRC

requirements.

In order to participate in the Certification Programs, a manufacturer / responsible party shall rate a product whose energy and energy-related performance characteristics are to be certified in accordance with mandatory NFRC rating procedures. At present, a manufacturer/responsible party may elect to rate products for U-factor, SHGC, VT, Air Leakage, Condensation Resistance, or any other procedure adopted by NFRC, and to include those ratings on the NFRC temporary label affixed to its products, or on the NFRC Label Certificate. U-factor, SHGC and VT, AL, and Condensation Resistance rating reports shall be obtained from a laboratory, which has been accredited by NFRC in accordance with the requirements of the NFRC 701.

The rating shall then be reviewed by an IA which has been licensed by NFRC in accordance with the requirements of the NFRC 702. NFRC-licensed IAs also review label format and content, conduct in-plant inspections for quality assurance in accordance with the requirements of the NFRC 702, and issue a product Certification Authorization Report (CAR), or approve for issuance an NFRC Label Certificate for site-built or CMA products and attachment products. The IA is also responsible for the investigation of potential violations (prohibited activities) as set forth in the NFRC 707 Compliance and Monitoring Program.

Ratings for products that are labeled with the NFRC Temporary and Permanent Label, or products that are listed on an NFRC Label Certificate, in accordance with NFRC requirements, are considered to be NFRC-certified. NFRC maintains a Certified Products Directory (CPD), listing product lines and individual products selected by the manufacturer/responsible party for which certification authorization has been granted.

NFRC manages the Rating System and regulates the Product Certification Program (PCP), Laboratory Accreditation Program (LAP) and Certification Agency Program (CAP) in accordance with the NFRC 700 (PCP), the NFRC 701 (LAP), the NFRC 702 (CAP), the NFRC 705 (CMA-PCP), and the NFRC 708 (CEAP) procedures, and conducts compliance activities under all these programs as well as the NFRC 707 Compliance and Monitoring Program (CAMP). NFRC continues to develop the Rating System and each of the programs.

NFRC owns all rights in and to each of the NFRC 700, NFRC 701, NFRC 702, NFRC 705, NFRC 707, NFRC 708 and each procedure, which is a component of the Rating System, as well as each of its registration marks, trade names, and other intellectual property.

The structure of the NFRC program and relationships among participants are shown in Figure 1, Figure 2, and Figure 3. For additional information on the roles of the IAs and laboratories and operation of the IA Program and Accreditation Program, see the NFRC 700 (PCP), NFRC 701 (LAP), and NFRC 702 (CAP) respectively.

Figure 1

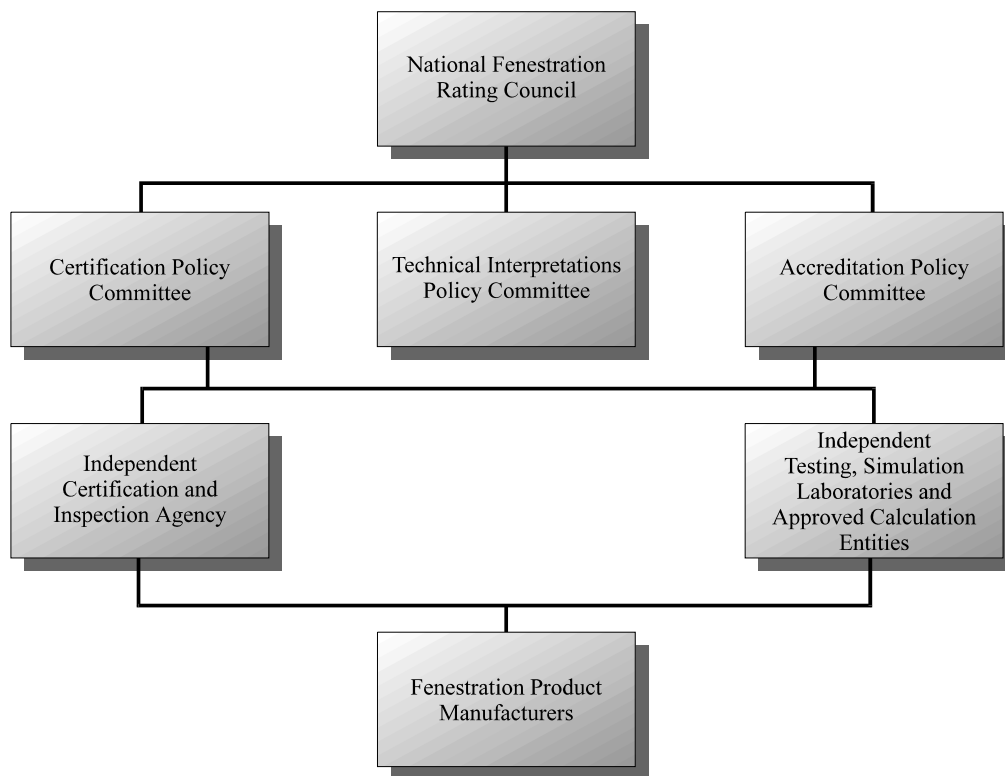


Figure 2

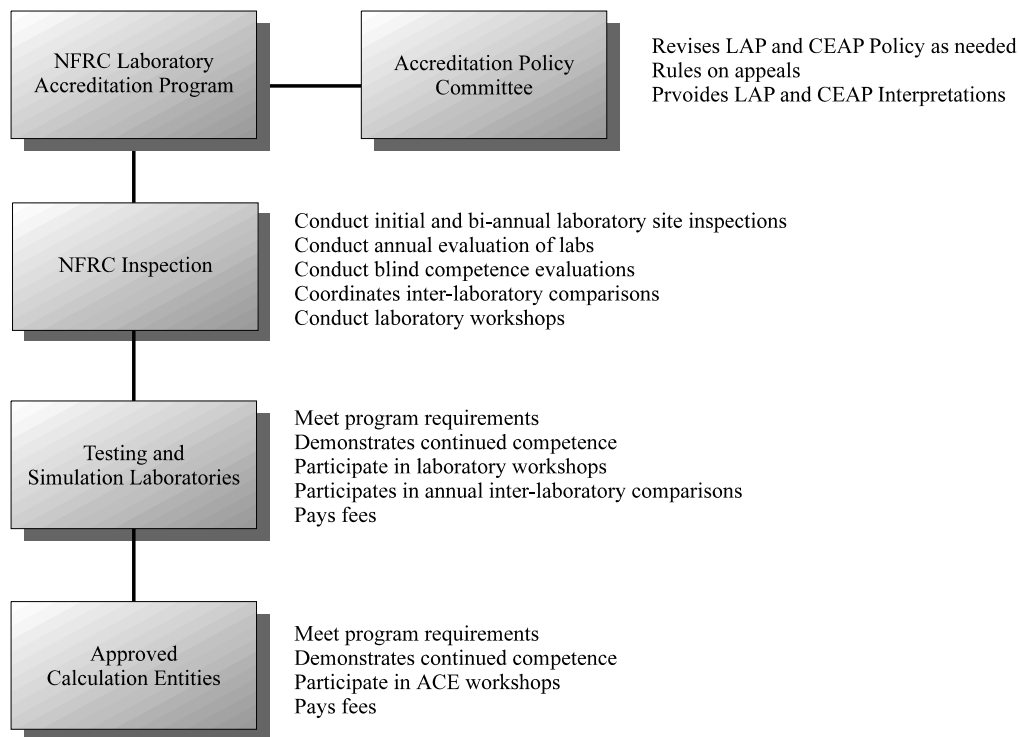
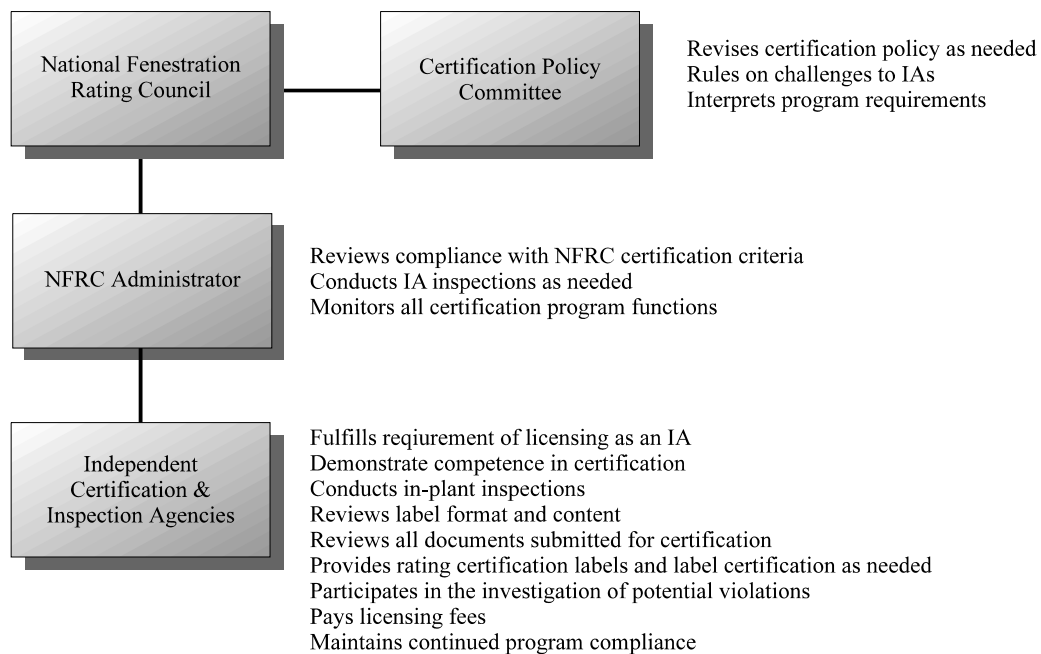


Figure 3



Questions on the use of this procedure should be addressed to:

National Fenestration Rating Council
6305 Ivy Lane, Suite 140
Greenbelt, MD 20770
Voice: (301) 589-1776
Fax: (301) 589-3884
Email: info@nfrc.org
Website: www.nfrc.org



DISCLAIMER

NFRC certification is the authorized act of a manufacturer/responsible party in: (a) labeling a fenestration or related attachment product with an NFRC Permanent Label and NFRC Temporary Label, or (b) generating a site built or CMA label certificate, either of which bears one or more energy performance ratings reported by NFRC-accredited simulation and testing laboratories and authorized for certification by an NFRC-licensed IA. Each of these participants acts independently to report, authorize certification, and certify the energy-related ratings of fenestration and related attachment products.

NFRC does not certify a product and certification does not constitute a warranty of NFRC regarding any characteristic of a fenestration or fenestration-related attachment product. Certification is not an endorsement of or recommendation for any product or product line or any attribute of a product or product line. NFRC is not a merchant in the business of selling fenestration products or fenestration-related products, and therefore cannot warrant products as to their merchantability or fitness for a particular use.

NFRC THEREFORE DISCLAIMS ANY AND ALL LIABILITY THAT MAY ARISE FROM OR IN CONNECTION WITH SERVICES PROVIDED BY, DECISIONS MADE BY OR REPORTS OR CERTIFICATIONS ISSUED OR GRANTED BY ANY NFRC-ACCREDITED LABORATORY, NFRC-LICENSED IA OR ANY PRODUCT MANUFACTURER/RESPONSIBLE PARTY; RELIANCE ON ANY NFRC PRODUCT DESCRIPTION, SPECIFICATION, RATING, TEST OR CERTIFICATION, WHETHER APPEARING IN A REPORT, A PRODUCT CERTIFICATION AUTHORIZATION OR A PRINTED OR ELECTRONIC DIRECTORY, OR ON A LABEL, OR ON A LABEL CERTIFICATE; OR THE SALE OR USE OF ANY NFRC-RATED OR CERTIFIED PRODUCT OR PRODUCT LINE; INCLUDING BUT NOT LIMITED TO DAMAGES FOR PERSONAL OR OTHER INJURY, LOST PROFITS, LOST SAVINGS OR OTHER CONSEQUENTIAL OR INCIDENTAL DAMAGES.

NFRC program participants are required to indemnify NFRC from and against such liability.



Table of Contents

Foreword		ii
Disclaimer		vi
1. Purpose		1
2. Scope		1
2.1 PRODUCTS COVERED		1
2.2 PRODUCTS AND EFFECTS NOT COVERED		1
3. Referenced Documents		2
4. Terminology		2
5. Significance and Use		2
6. Measurement Procedure		3
7. Calculation of Results		4
7.1 ORDER OF CALCULATIONS.....		4
7.2 MULTIPANE IG UNITS.....		4
Figure 7-1 Glazing system consisting of L plane parallel layers separated by gas-filled gaps		4
7.2.1 For single glazing:.....		4
7.2.2 For double glazing:		5
7.2.3 For triple glazing:.....		5
7.3 COMPUTATION OF SPECTRAL AVERAGES.....		6
7.3.1 General Method for Computing Spectral Averages.....		6
7.3.2 Method of Interpolation		7
7.3.3 Common Wavelength Set		7
7.3.4 Numerical Integration		7
7.4 COMPUTATION OF SOLAR SPECTRAL AVERAGES		7
7.4.1 Source Spectrum		7
7.4.2 Detector Spectrum		7

7.4.3	Common Wavelength Set	7
7.4.4	Numerical Integration	8
7.5	COMPUTATION OF VISIBLE (PHOTOPIC) SPECTRAL AVERAGES	8
7.5.1	Source Spectrum	8
7.5.2	Detector Spectrum	8
7.5.3	Common Wavelength Set	8
7.5.4	Numerical Integration	8
7.6	DAMAGE-WEIGHTED TRANSMITTANCE	9
7.6.1	Source Spectrum	9
7.6.2	Detector Spectrum	9
7.6.3	Common Wavelength Set	9
7.6.4	Numerical Integration	9
8.	Report.....	10
	Index	12

1. PURPOSE

This test method specifies the methodologies for determining the solar optical properties of glazing materials and systems. This test method is issued under the fixed designation NFRC 300; the number following the designation indicates the year of original adoption or, in the case of revision, the year of last revision.

2. SCOPE

This test method covers the determination by measurement and calculation of the optical properties relevant to energy transfer in flat specular glazing materials.

This test method includes the calculation of various properties, which can be derived from the spectral measurements, including spectrally averaged transmittance and reflectance quantities.

This test method includes the calculation procedures necessary to determine the net optical properties of combinations of discrete glazing elements.

2.1 Products Covered

The following materials are permitted to be measured using this test method:

- A. Monolithic homogeneous specular or slightly diffusing materials including glass plates, plastic sheets and flexible plastic film.
- B. Glass or plastic substrates as described in Section 2.1.A with coatings applied by chemical or vacuum deposition processes or with applied films.
- C. Laminated glazings consisting of two or more rigid layers combined with one or more adhesive interlayers.

2.2 Products and Effects not Covered

The following materials and systems shall not be measured or calculated using this test method either because they cannot be measured using a spectroradiometer or because no calculation procedures have yet been developed to determine the relevant parameters from such spectroradiometric measurements:

- A. Strongly diffusing materials.
- B. Non-homogeneous patterned or textured materials.
- C. Complex glazing or shading systems including but not limited to blinds, drapes, holographic and prismatic panels.
- D. Curved glazing including but not limited to domed skylights; and

- E. Combinations of glazing elements that include one or more diffusing elements. A single slightly diffusing element, however, can be measured directly as specified in Section 2.1.A.

This method is generally suitable for measuring the transmittance and reflectance of architectural glazing materials such as glass (coated and uncoated), etc. The derived average properties are suitable for determining performance parameters such as thermal transmittance (U-Factor), solar heat gain coefficient (SHGC) and visible transmittance (VT) of a fenestration assembly.

This test method may involve hazardous materials, operations and equipment. This test method does not presume to address all of the safety issues associated with its use. It is the responsibility of the user of this test method to establish appropriate safety and health practices and determine the applicability of regulatory limitations prior to use.

3. REFERENCED DOCUMENTS

ASTM E 903-1996	Standard Test Method for Solar Absorptance, Reflectance and Transmittance of Materials Using Integrating Spheres.
CIE 89/3-1991	CIE Technical Collection 1990/3. Division 6 Report: On the deterioration of exhibited Museum Objects by Optical radiation.
ISO 9845-1:1992 (E)	Solar energy - Reference Solar Spectral Irradiance At The Ground At Different Receiving Conditions.
ISO/CIE 10526: 1991 (E)	CIE Standard Colorimetric Illuminants.
ISO/CIE 10527: 1991 (E)	CIE Standard Colorimetric Observers.

4. TERMINOLOGY

See NFRC Glossary and Terminology of all definitions.

5. SIGNIFICANCE AND USE

The thermal performance of glazing materials utilized in building facades plays a major role in the consumption and conservation of energy. Transmittance and reflectance are important materials parameters used to calculate the thermal transmittance (U-Factor), solar heat gain coefficient (SHGC) and visible transmittance (VT) of glazing materials and systems.

6. MEASUREMENT PROCEDURE

Measure spectral transmittance and reflectance data from at least 0.3 μm to 2.5 μm as described in ASTM E 903.

In the case of glazings incorporating coatings, special requirements apply to sample selection and preparation:

- A. For coatings subject to aging and atmospheric attack, the specimen to be measured shall be fresh and in good condition.
- B. For coatings subject to heat treatment, such as tempering, two issues shall be addressed:
 - i. Assuring the appropriate thermal history of the sample; and
 - ii. Assuring that the sample remains flat enough after heat treatment to measure accurately.

The measurement of the final optical properties is complicated because suitable representative samples cannot be directly cut from large tempered sheets. Either of the following two sampling procedures are permitted to be followed:

- iii. One alternative is to prepare small samples (e.g., 100 mm by 100 mm, 4 in. by 4 in.), which accurately represent the commercial product after heat treatment. This is accomplished by heat treating the small coated samples, while supporting the samples so that they do not sag, in a lab furnace. Temperature is monitored using a thermocouple in contact with the center of the sample. Critical peak temperature is matched to that of the exit of the commercial tempering line.
- iv. The second alternative uses a larger heat-strengthened sample that can be broken down into smaller samples for measurement. This method ensures the proper temperature history by running a large sample through the tempering line with the proper set ups for the normal tempering of that product except that the quench is turned off. The sample is then broken into pieces and one is selected that is small enough to fit in the measurement apparatus and large enough to provide an accurate measurement.
- v. For specular reflectance measurements, no deviation from flatness shall be permitted when visually checking the sample with a straight edge.
- vi. To verify uniformity of the measurements of a heat-treated sample, four separate measurements shall be taken and averaged, by rotating the sample 90 degrees between scans.

7. CALCULATION OF RESULTS

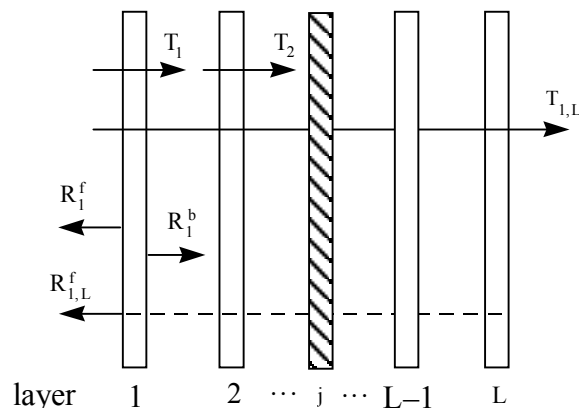
7.1 Order of Calculations

Section 7.2 details how the optical properties of individual glazing layers are permitted to be combined to give the optical properties of a glazing system consisting of several layers. These calculations shall be performed before obtaining spectrally averaged properties for the glazing system as in Section 7.3. Significant errors can result if spectrally averaged properties for glazing layers are used to calculate the properties of glazing systems.

7.2 Multipane IG Units

The net properties of a system consisting of layers separated by gas-filled gaps, as in Figure 7-1, can be calculated from the properties of the individual layers. These individual properties may be measured in accordance with Section 6. Neither wavelength, angle of incidence nor polarization appear explicitly in these equations. The most common usage of these equations is to calculate glazing system properties wavelength-by-wavelength at normal incidence, but they are equally valid if angle-dependent or polarization-dependent properties are available.

Figure 7-1 Glazing system consisting of L plane parallel layers separated by gas-filled gaps



7.2.1 For single glazing:

Measure the properties T_1 , R_1^f and R_1^b (transmittance, front side reflectance and back side reflectance respectively, where the front side is the side facing the exterior) of the layer as a function of wavelength according to Section 6. The front side absorptance of a layer j in isolation is $A_j^f = 1 - T_j - R_j^f$ and the back side absorptance is

$$A_j^b = 1 - T_j - R_j^b.$$

7.2.2 For double glazing:

Measure the spectral properties of layer 1 (T_1 , R_1^f and R_1^b) and layer 2 (T_2 , R_2^f and R_2^b) according to Section 6.

Calculate the properties of the system consisting of layers 1 and 2:

$$T_{12} = \frac{T_1 T_2}{1 - R_1^b R_2^f} \quad R_{12}^f = R_1^f + \frac{T_1^2 R_2^f}{1 - R_1^b R_2^f} \quad R_{12}^b = R_2^b + \frac{T_2^2 R_1^b}{1 - R_1^b R_2^f}$$

$$\hat{A}_1^f = A_1^f + \frac{T_1 R_2^f A_1^b}{1 - R_1^b R_2^f} \quad \hat{A}_2^f = \frac{T_1 A_2^f}{1 - R_1^b R_2^f} \quad \text{Equation 7-1}$$

Where

T_{12} , R_{12}^f and R_{12}^b = the transmittance, front side reflectance and back side reflectance of the glazing system consisting of layers 1 and 2

\hat{A}_1^f = the absorptance of layer 1 in the glazing system

\hat{A}_2^f = the absorptance of layer 2 in the glazing system, assuming that radiation is incident on the front (exterior) side

7.2.3 For triple glazing:

Measure the spectral properties of layer 1 (T_1 , R_1^f and R_1^b), layer 2 (T_2 , R_2^f and R_2^b) and layer 3 (T_3 , R_3^f and R_3^b) according to Section 6. Calculate the properties of the system consisting of layers 1 and 2 as in the case of double glazing above.

Calculate the properties of the system consisting of layers 1 through 3 from:

$$T_{13} = \frac{T_{12} T_3}{1 - R_{12}^b R_3^f} \quad R_{13}^f = R_{12}^f + \frac{T_{12}^2 R_3^f}{1 - R_{12}^b R_3^f} \quad R_{13}^b = R_3^b + \frac{T_3^2 R_{12}^b}{1 - R_{12}^b R_3^f}$$

$$\hat{A}_1^f = A_1^f + \frac{T_1 R_{23}^f A_1^b}{1 - R_1^b R_{23}^f} \quad \hat{A}_2^f = \frac{T_1 A_2^f}{1 - R_1^b R_{23}^f} + \frac{T_{12} R_3^f A_2^b}{1 - R_{12}^b R_3^f} \quad \hat{A}_3^f = \frac{T_{12} A_3^f}{1 - R_{12}^b R_3^f} \quad \text{Equation 7-2}$$

Where

T_{13} , R_{13}^f and R_{13}^b = the transmittance, front side reflectance and back side reflectance of the glazing system consisting of layers 1, 2 and 3

\hat{A}_1^f, \hat{A}_2^f and \hat{A}_3^f = the absorptances of each layer in the glazing system, assuming that radiation is incident on the front (exterior) side

For more than three glazing layers continue the progression above recursively to obtain the system transmittance and reflectance values. For example, to progress to quadruple glazing, increment index 2→3 and 3→4 in the expressions for triple glazing above.

For any number of layers calculate the absorption in each layer considered as part of the system for radiation incident on the front side of the system from:

$$A_j^f = \frac{T_{1,j-1}A_j^f}{1 - R_{1,j-1}^b R_{j,L}^f} + \frac{T_{1,j}R_{j+1,L}^f A_j^b}{1 - R_{1,j}^b R_{j+1,L}^f} \quad \text{using} \quad \begin{matrix} T_{1,0} = 1, T_{j,j} = T_j \\ R_{1,0}^f = 0 \\ R_{L+1,L}^b = 0 \\ R_{j,j}^{f/b} = R_j^{f/b} \end{matrix} \quad \text{Equation 7-3}$$

Calculate spectral average parameters as needed in accordance with the following section.

7.3 Computation of Spectral Averages

7.3.1 General Method for Computing Spectral Averages

The spectral average of property P of type ‘ x ’ is calculated according to:

$$P_x = \frac{\int_a^b \Phi_x(\lambda) P(\lambda) \Gamma_x(\lambda) d\lambda}{\int_a^b \Phi_x(\lambda) \Gamma_x(\lambda) d\lambda} \quad \text{Equation 7-4}$$

Where

- P = the property to be averaged
- Φ_x = a weighting function representing the relative intensity of source radiation for average type ‘ x ’
- Γ_x = a weighting function representing the detector response for average type ‘ x ’

The integration is carried out between the wavelengths a and b .

In practice, P , Φ_x and Γ_x are often measured or tabulated at discrete wavelengths, so that the expression above must be evaluated numerically over a set of N discrete wavelengths $\lambda_1, \lambda_2, \dots, \lambda_{N-1}, \lambda_N$. However, P , Φ_x and Γ_x are permitted to be measured or tabulated at different wavelengths, so P , Φ_x and Γ_x shall be interpolated onto a common wavelength set before evaluating the integrals numerically.

7.3.2 Method of Interpolation

Use linear interpolation to obtain values between measured or tabulated points in the source, detector or sample data.

In addition to the method of interpolation, the treatment of the end-points of data sets can affect the calculation. Do not extrapolate beyond the limits of any spectra. If data is required outside the limits, use a null value (zero).

7.3.3 Common Wavelength Set

This is the set of wavelengths that the source, detector and data are mapped onto before performing the numerical integration. Use the common wavelength set specified for each type of average.

7.3.4 Numerical Integration

Use the trapezoidal (trapezium) method to numerically approximate the integrals of Equation 7-4. This rule assumes that the quantity to be integrated varies approximately linearly between the values obtained on the common wavelength set:

$$\int_a^b f(\lambda)d\lambda \approx \sum_{i=1}^{N-1} \frac{f(\lambda_i) + f(\lambda_{i+1})}{2} \Delta\lambda_i \quad \text{Equation 7-5}$$

Where

$$\Delta\lambda_i = \lambda_{i+1} - \lambda_i$$

7.4 Computation of Solar Spectral Averages

7.4.1 Source Spectrum

Use the tabulated solar spectral irradiance distribution from Table 1, Column 2 of Standard ISO 9845-1:1992(E), as the source spectrum E_λ .

7.4.2 Detector Spectrum

Use a '100%' detector function, i.e., the detector function is 1.0 at all wavelengths.

7.4.3 Common Wavelength Set

Use the wavelengths between 0.3 μm and 2.5 μm to which the source spectrum is tabulated as the common wavelength set, adding the end points 0.3 μm and 2.5 μm . The source spectrum shall be extrapolated or interpolated onto the end-points 0.3 μm and 2.5 μm since these

wavelengths are not included in the tabulated wavelength set. Interpolate the measured data onto the common wavelength set.

7.4.4 Numerical Integration

The detector function is permitted to be omitted from the calculations. Calculate the solar spectral average of a property P as follows:

$$P_{sol} = \frac{\int_{0.3}^{2.5} P(\lambda) E_{\lambda} \cdot d\lambda}{\int_{0.3}^{2.5} E_{\lambda} \cdot d\lambda} \approx \frac{\sum_{i=1}^{N-1} \frac{E_{\lambda_i} P(\lambda_i) + E_{\lambda_{i+1}} P(\lambda_{i+1})}{2} \Delta\lambda_i}{\sum_{i=1}^{N-1} \frac{E_{\lambda_i} + E_{\lambda_{i+1}}}{2} \Delta\lambda_i} \quad \text{Equation 7-6}$$

Where

- $\lambda_1 \dots \lambda_N$ = the wavelengths of the common wavelength set,
 $\Delta\lambda_i = \lambda_{i+1} - \lambda_i$
- E_{λ_i} = the tabulated or interpolated value of the source spectrum at wavelength, λ_i
- $P(\lambda_i)$ = the measured or interpolated value of the property at wavelength, λ_i

7.5 Computation of Visible (Photopic) Spectral Averages

7.5.1 Source Spectrum

Use the CIE D65 standard illuminant from Table 1, Column 3 of ISO/CIE 10526 as the source spectrum E_{λ} .

7.5.2 Detector Spectrum

Use the observer from Table 1, Column 3 of Standard ISO/CIE 10527, as the detector spectrum. This column of the table lists the color matching function \bar{y} of the CIE 1931 Standard (2°) observer. This is equivalent to the CIE spectral luminous efficiency function V_{λ} .

7.5.3 Common Wavelength Set

Use a wavelength set constructed by taking every 0.005 μm point between 0.38 μm and 0.78 μm including the endpoints. Interpolate the data, source and detector spectra onto this wavelength set.

7.5.4 Numerical Integration

Calculate the visible (photopic) spectral average of a property P as follows:

$$P_{vis} = \frac{\int_{0.38}^{0.78} E_{\lambda} P(\lambda) V_{\lambda} d\lambda}{\int_{0.38}^{0.78} E_{\lambda} V_{\lambda} d\lambda} \approx \frac{\sum_{i=1}^{N-1} \frac{E_{\lambda_i} P(\lambda_i) V_{\lambda_i} + E_{\lambda_{i+1}} P(\lambda_{i+1}) V_{\lambda_{i+1}}}{2} \Delta\lambda_i}{\sum_{i=1}^{N-1} \frac{E_{\lambda_i} V_{\lambda_i} + E_{\lambda_{i+1}} V_{\lambda_{i+1}}}{2} \Delta\lambda_i} \quad \text{Equation 7-7}$$

Where

- $\lambda_1 \dots \lambda_N$ = the wavelengths of the common wavelength set,
 $\Delta\lambda_i = \lambda_{i+1} - \lambda_i$
- E_{λ_i} = the tabulated or interpolated value of the source spectrum at wavelength, λ_i
- V_{λ_i} = the tabulated or interpolated value of the detector spectrum at wavelength, λ_i
- $P(\lambda_i)$ = the measured or interpolated value of the property at wavelength, λ_i

7.6 Damage-Weighted Transmittance

7.6.1 Source Spectrum

Use the tabulated solar spectral irradiance distribution from Table 1, Column 2 of Standard ISO 9845-1:1992(E), as the source spectrum E_{λ} .

7.6.2 Detector Spectrum

The detector weighting spectrum is given by an analytic function – the CIE action spectrum taken from CIE 89/3 (where λ is in μm):

$$S_{dm,rel}(\lambda) = e^{(3.6-12.0\lambda)} \quad \text{Equation 7-8}$$

The detector spectrum is formed by evaluating the action spectrum function at each wavelength of the common wavelength set.

7.6.3 Common Wavelength Set

Use the wavelengths of the tabulated source spectrum between 0.3 μm and 0.7 μm as the common wavelength set, adding the end points 0.3 μm and 0.7 μm . Interpolate the measured data onto this wavelength set and interpolate the source spectrum onto the end points 0.3 μm and 0.7 μm .

7.6.4 Numerical Integration

Calculate the CIE damage-weighted transmittance as follows:

$$T_{dw} = \frac{\int_{0.3}^{0.7} E_{\lambda} T(\lambda) S_{dm,rel}(\lambda) d\lambda}{\int_{0.3}^{0.7} E_{\lambda} S_{dm,rel}(\lambda) d\lambda} \approx \frac{\sum_{i=1}^{N-1} \frac{E_{\lambda_i} T(\lambda_i) S_{dm,rel}(\lambda_i) + E_{\lambda_{i+1}} T(\lambda_{i+1}) S_{dm,rel}(\lambda_{i+1})}{2} \Delta\lambda_i}{\sum_{i=1}^{N-1} \frac{E_{\lambda_i} S_{dm,rel}(\lambda_i) + E_{\lambda_{i+1}} S_{dm,rel}(\lambda_{i+1})}{2} \Delta\lambda_i}$$

Equation 7-9

Where

- $\lambda_1 \dots \lambda_N$ = the wavelengths of the common wavelength set,
 $\Delta\lambda_i = \lambda_{i+1} - \lambda_i$
- E_{λ_i} = the tabulated or interpolated value of the source spectrum at wavelength, λ_i
- $S_{dm,rel}(\lambda_i)$ = the value of the detector function at wavelength, λ_i
- $T(\lambda_i)$ = the measured or interpolated value of the property at wavelength, λ_i

[**Note 1.**: T_{dw} is considered to be the single most appropriate factor relating to relative color change of materials due to solar radiation transmitted through a glazing system. There are many other variables that may contribute to rate of damage or fading, such as temperature, type of material and type of pigment.]

8. REPORT

The report shall include the following:

- A. Complete identification of the material tested, specimen size and thickness, surface contour if any, description of optical properties such as diffuse or specularly reflecting, clear or translucent transmitting, etc.
- B. Identification of the instrument used. Manufacturer's name and model number including modifications and accessories are sufficient for a commercial instrument. Other instruments shall be described in detail including estimations of their accuracy. Record the instrument parameters (slit width, scan speed, response time, gain, resolution, number of scans, wavelength range and interval) used for the particular measurement. A description of the reflectance accessory shall be kept on record at the place of measurement.
- C. Last date of instrument calibration. The calibration and maintenance history of the instrument shall be on record at the place of measurement.
- D. Complete identification of any and all standards used for calibrating the measurements. The calibration history of the standard shall be on record at the place of measurement.
- E. The dates of measurements.

- F. The name of the operator who made the measurements.
- G. Solar transmittance, absorptance and reflectance, reported to the nearest 0.001 unit or 0.1 percent.

INDEX

A

Absorptance	2
Air mass	3
ASTM E 903	2

C

CIE 1931	10
CIE 89/3	2, 11

D

Diffuse.....	3
--------------	---

I

Integrating sphere.....	3
Irradiance	2, 3
ISO 9845	2, 9, 11
ISO/CIE 10526.....	2, 10
ISO/CIE 10527.....	2, 10

R

Radiant flux.....	3
Reflectance.....	2, 3