



# National Fenestration Rating Council Incorporated

**NFRC 704-2012<sub>[E0A1]</sub>**

Fee Schedule for  
NFRC 700 Product Certification Program (PCP),  
NFRC 701 Laboratory Accreditation Program (LAP),  
NFRC 702 Certification Agency Program (CAP),  
NFRC 705 Component Modeling Approach (CMA),  
NFRC 706 Participation in IG Certification Program,  
and NFRC 708 Calculation Entity Approval Program (CEAP)

---

**© 2012 NATIONAL FENESTRATION RATING COUNCIL, INC.**

**PREPARED BY:**

National Fenestration Rating Council  
6305 Ivy Lane, Suite 140  
Greenbelt, MD 20770  
Voice: (301) 589-1776  
Fax: (301) 589-3884  
Email: [info@nfr.org](mailto:info@nfr.org)  
Website: [www.nfr.org](http://www.nfr.org)



## ***FOREWORD***

The National Fenestration Rating Council, Incorporated ("NFRC") has developed and operates a uniform rating system for energy and energy-related performance of fenestration products. The Rating System determines the U-factor, Solar Heat Gain Coefficient (SHGC) and Visible Transmittance (VT) of a product, which are mandatory ratings for labeling NFRC certified products and are mandatory ratings for inclusion on label certificates, and are supplemented by procedures for voluntary ratings of products for Air Leakage (AL), and Condensation Resistance. Together, these rating procedures, as set forth in documents published by NFRC, are known as the NFRC Rating System.

The Rating System employs computer simulation and physical testing by NFRC-accredited laboratories to establish energy and related performance ratings for fenestration product types. The Rating System is reinforced by a certification program under which NFRC-licensed responsible parties claiming NFRC product certification shall label and certify fenestration products to indicate those energy and related performance ratings, provided the ratings are authorized for certification by an NFRC-licensed certification and Inspection Agency (IA).

The requirements of the rating, certification, and labeling program (the "Certification Program") are set forth in the most recent versions of the following as amended, updated or interpreted from time to time:

- NFRC 700 Product Certification Program (the "PCP")
- NFRC 705 Component Modeling Approach ("CMA") Product Certification Program (the "CMA-PCP").

Through the Certification Programs and the most recent versions of its companion programs as amended, updated or interpreted from time to time:

- The laboratory accreditation program (the "Accreditation Program"), set forth in the NFRC 701 Laboratory Accreditation Program (the "LAP")
- The IA licensing program (the "IA Program"), set forth in NFRC 702 Certification Agency Program (the "CAP")
- The CMA Approved Calculation Entity ("ACE") licensing program (the "ACE Program") as set forth in the NFRC 708 Calculation Entity Approval Program (the "CEAP"),

NFRC intends to ensure the integrity and uniformity of NFRC ratings, certification, and

labeling by ensuring that responsible parties, testing and simulation laboratories, and IAs adhere to strict NFRC requirements.

In order to participate in the Certification Programs, a manufacturer / responsible party shall rate a product whose energy and energy-related performance characteristics are to be certified in accordance with mandatory NFRC rating procedures. At present, a manufacturer/responsible party may elect to rate products for U-factor, SHGC, VT, Air Leakage, Condensation Resistance, or any other procedure adopted by NFRC, and to include those ratings on the NFRC temporary label affixed to its products, or on the NFRC Label Certificate. U-factor, SHGC and VT, AL, and Condensation Resistance rating reports shall be obtained from a laboratory, which has been accredited by NFRC in accordance with the requirements of the NFRC 701.

The rating shall then be reviewed by an IA which has been licensed by NFRC in accordance with the requirements of the NFRC 702. NFRC-licensed IAs also review label format and content, conduct in-plant inspections for quality assurance in accordance with the requirements of the NFRC 702, and issue a product Certification Authorization Report (CAR), or approve for issuance an NFRC Label Certificate for site-built or CMA products and attachment products. The IA is also responsible for the investigation of potential violations (prohibited activities) as set forth in the NFRC 707 Compliance and Monitoring Program.

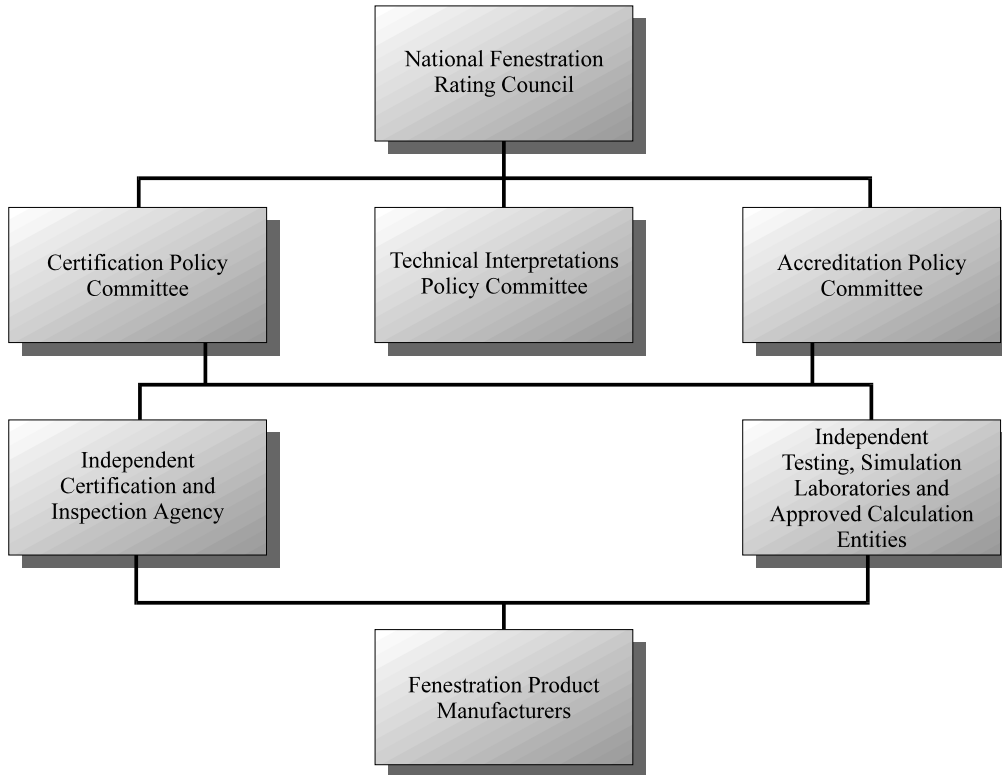
Ratings for products that are labeled with the NFRC Temporary and Permanent Label, or products that are listed on an NFRC Label Certificate, in accordance with NFRC requirements, are considered to be NFRC-certified. NFRC maintains a Certified Products Directory (CPD), listing product lines and individual products selected by the manufacturer/responsible party for which certification authorization has been granted.

NFRC manages the Rating System and regulates the Product Certification Program (PCP), Laboratory Accreditation Program (LAP) and Certification Agency Program (CAP) in accordance with the NFRC 700 (PCP), the NFRC 701 (LAP), the NFRC 702 (CAP), the NFRC 705 (CMA-PCP), and the NFRC 708 (CEAP) procedures, and conducts compliance activities under all these programs as well as the NFRC 707 Compliance and Monitoring Program (CAMP). NFRC continues to develop the Rating System and each of the programs.

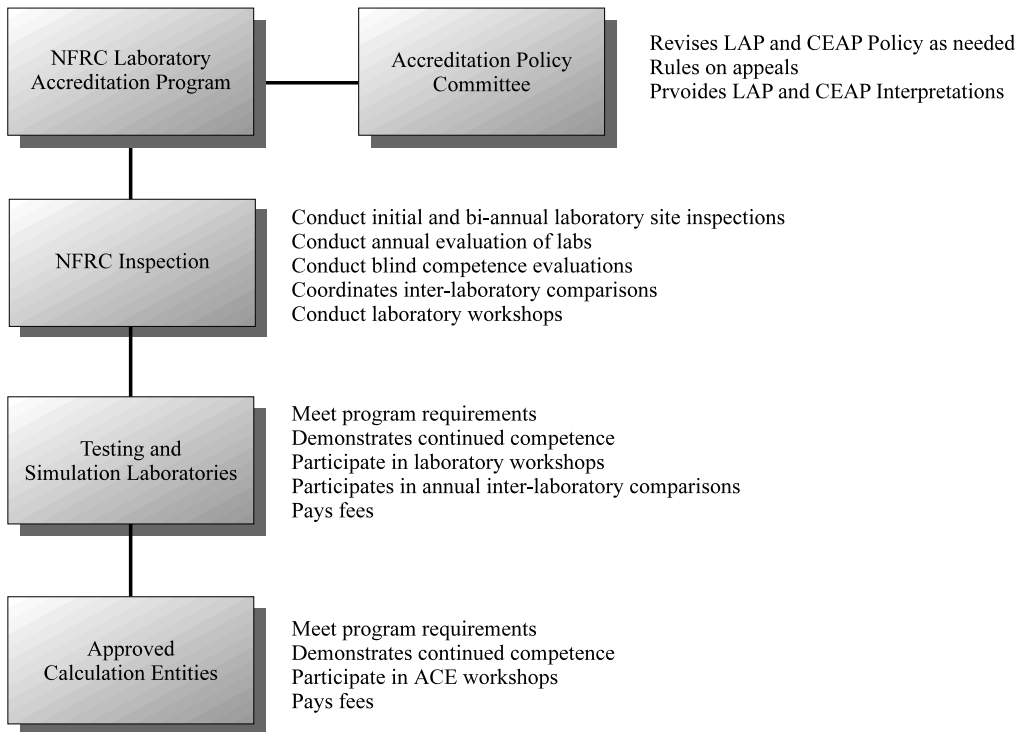
NFRC owns all rights in and to each of the NFRC 700, NFRC 701, NFRC 702, NFRC 705, NFRC 707, NFRC 708 and each procedure, which is a component of the Rating System, as well as each of its registration marks, trade names, and other intellectual property.

The structure of the NFRC program and relationships among participants are shown in Figure 1, Figure 2, and Figure 3. For additional information on the roles of the IAs and laboratories and operation of the IA Program and Accreditation Program, see the NFRC 700 (PCP), NFRC 701 (LAP), and NFRC 702 (CAP) respectively.

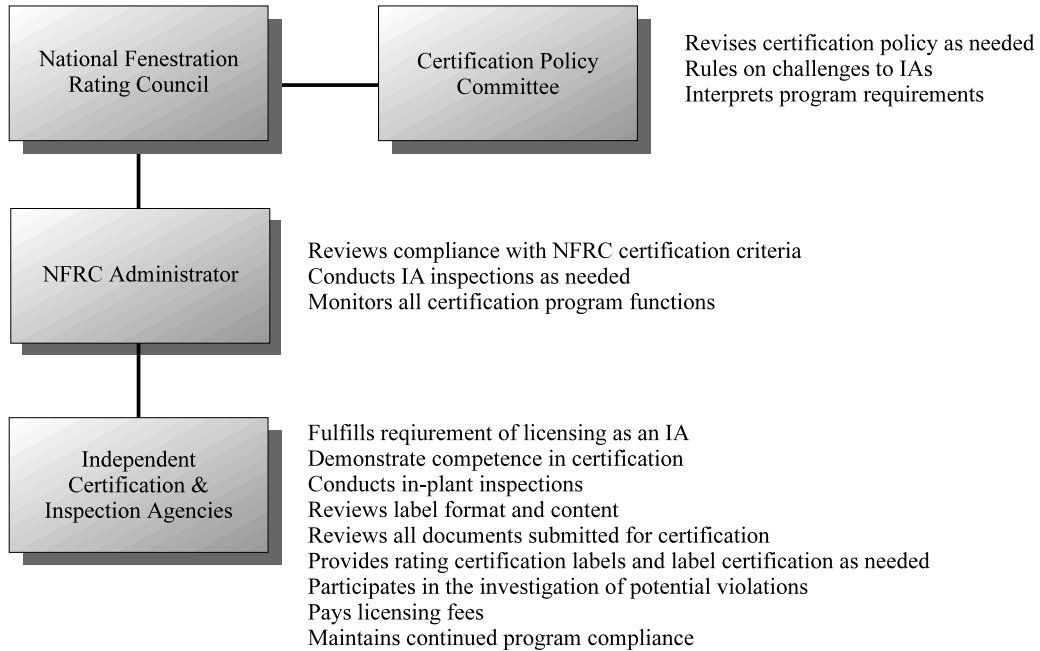
**Figure 1**



**Figure 2**



**Figure 3**



Questions on the use of this procedure should be addressed to:

National Fenestration Rating Council  
6305 Ivy Lane, Suite 140  
Greenbelt, MD 20770  
Voice: (301) 589-1776  
Fax: (301) 589-3884  
Email: [info@nfrc.org](mailto:info@nfrc.org)  
Website: [www.nfrc.org](http://www.nfrc.org)



### ***DISCLAIMER***

NFRC certification is the authorized act of a manufacturer/responsible party in: (a) labeling a fenestration or related attachment product with an NFRC Permanent Label and NFRC Temporary Label, or (b) generating a site built or CMA label certificate, either of which bears one or more energy performance ratings reported by NFRC-accredited simulation and testing laboratories and authorized for certification by an NFRC-licensed IA. Each of these participants acts independently to report, authorize certification, and certify the energy-related ratings of fenestration and related attachment products.

NFRC does not certify a product and certification does not constitute a warranty of NFRC regarding any characteristic of a fenestration or fenestration-related attachment product. Certification is not an endorsement of or recommendation for any product or product line or any attribute of a product or product line. NFRC is not a merchant in the business of selling fenestration products or fenestration-related products, and therefore cannot warrant products as to their merchantability or fitness for a particular use.

NFRC THEREFORE DISCLAIMS ANY AND ALL LIABILITY THAT MAY ARISE FROM OR IN CONNECTION WITH SERVICES PROVIDED BY, DECISIONS MADE BY OR REPORTS OR CERTIFICATIONS ISSUED OR GRANTED BY ANY NFRC-ACCREDITED LABORATORY, NFRC-LICENSED IA OR ANY PRODUCT MANUFACTURER/RESPONSIBLE PARTY; RELIANCE ON ANY NFRC PRODUCT DESCRIPTION, SPECIFICATION, RATING, TEST OR CERTIFICATION, WHETHER APPEARING IN A REPORT, A PRODUCT CERTIFICATION AUTHORIZATION OR A PRINTED OR ELECTRONIC DIRECTORY, OR ON A LABEL, OR ON A LABEL CERTIFICATE; OR THE SALE OR USE OF ANY NFRC-RATED OR CERTIFIED PRODUCT OR PRODUCT LINE; INCLUDING BUT NOT LIMITED TO DAMAGES FOR PERSONAL OR OTHER INJURY, LOST PROFITS, LOST SAVINGS OR OTHER CONSEQUENTIAL OR INCIDENTAL DAMAGES.

NFRC program participants are required to indemnify NFRC from and against such liability.



## Table of Contents

Foreword .....	ii
Figure 1 .....	iv
Figure 2 .....	iv
Figure 3 .....	v
Disclaimer .....	vi
1. Introduction .....	1
1.1 PROCESSING OF FEES.....	1
1.1.1 Fees .....	1
1.1.2 Workshops .....	2
1.2 FOREIGN CURRENCY.....	2
1.3 REQUESTS FOR CERTIFIED PRODUCTS DATABASE DATA .....	2
2. NFRC 700 Product Certification Program (PCP) and Spectral Data Approval Program Fees .....	3
2.1 REQUEST FOR EXEMPTION / EXTENSION .....	5
3. NFRC 702 Certification Agency Program (CAP) Fees.....	6
4. NFRC 701 Laboratory Accreditation Program (LAP) Fees .....	7
5. NFRC 705 Component Modeling Approach Product Certification Program (CMA PCP) Fees <sup>1</sup> .....	9
6. NFRC 708 Calculation Entity Approval Program (CEAP or “ACE Program”) Fees .....	10
7. CMA Software Usage Fees .....	11
8. NFRC 706 Participation in IG Certification Program .....	12

---

# 1. INTRODUCTION

---

The following Fee Schedule includes NFRC fees for participating in the Product Certification Program (“PCP” or Certification Program)\*, the Certification Agency Program (“CAP” or IA Program), the Laboratory Accreditation Program (“LAP” or Accreditation Program), Component Modeling Approach Product Certification Program (“CMA PCP”), Calculation Entity Approval Program (“CEAP” or ACE Program), and Participation in IG Certification Program.

**[Please Note:** Refer to Table 1 of the *NFRC 707-2012 Compliance and Monitoring Program* document (a stand-alone document, which can be found on the NFRC Website) for the listing of fines imposed against any individual or entity found to have engaged in a “prohibited activity” as defined by the Compliance and Monitoring Program.]

## 1.1 Processing of Fees

### 1.1.1 Fees

- A. Participation, licensing, accreditation, and certified simulator fees are invoiced the beginning of January for that fiscal year.
- B. NFRC 700 PCP Participant fees:
  - a. January 1<sup>st</sup> – Invoiced 100% of fees
  - b. April 1<sup>st</sup> – Minimum 50% of fees due
  - c. July 1<sup>st</sup> – Additional 25% of fees due
  - d. Prior to September 30<sup>th</sup> – Final 25% of fees due

NOTE: Participants are subject to suspension from program if fees are not received by due date.
- C. NFRC 705 CMA component fees are invoic<sup>ic</sup>ed on a quarterly basis; the last day of each period is:
  - a. March 31<sup>st</sup>
  - b. June 30<sup>th</sup>
  - c. September 30<sup>th</sup>
  - d. December 31<sup>st</sup>

---

\* Fees incurred by Program participants for services provided by Certification and Inspection Agencies (IAs), Accredited Laboratories and Approved Calculation Entities (ACEs) are separate and apart from the NFRC PCP fees listed in Section 2; please contact the respective agency or lab for information regarding those fees.

### **1.1.2 Workshops**

- A. Fees for required Accredited Laboratory and Licensed Inspection Agency workshops / webinars are invoiced May 1<sup>st</sup>.
- B. Fees for all training workshops, such as ACE or Certified Simulator Training workshop shall be received prior to attending the workshop. It is recommended payment be sent at time of registration; payment will guarantee the opportunity to participate in the training workshop.

### **1.2 Foreign Currency**

- A. All payments for fees shall be in U.S. currency
- B. Any fees received in foreign currency shall incur a foreign exchange fee per occurrence and will be invoiced accordingly. Foreign exchange fee shall be paid via U.S. currency only.

### **1.3 Requests for Certified Products Database Data**

External request from entities not related to NFRC will work as follows:

- A. All external requests are processed via a direct cost (real-time) fee. These queries include requests from the private sector; as well as those from manufacturers, consultants and others regarding information related to energy code development or the EPA/DOE ENERGY STAR® Window Program.
- B. Staff will work with the requester to define the details of the request which includes defining the scope of the query and the format of the information provided by NFRC.
- C. Staff will forward the fee to process the query to the requester as well as an invoice. Upon receipt of the invoiced fee, NFRC will process the query and forward the results to the requestor.

## 2. NFRC 700 PRODUCT CERTIFICATION PROGRAM (PCP) AND SPECTRAL DATA APPROVAL PROGRAM FEES

<b>Fenestration Product Manufacturers</b>	<b>Members</b>	<b>Non-Members</b>
Annual Participation Fee <sup>(1)</sup>		
< \$2m <sup>(2)</sup>	\$1,000	\$1,000
< \$2.01m – 5m	\$2,325	\$3,125
< \$5.01m – 10m	\$3,325	\$4,325
< \$10.01m – 20m	\$4,325	\$5,625
< \$20.01m – 30m	\$6,625	\$8,175
< \$30.01m – 40m	\$10,325	\$12,125
< \$40.01m – 50m	\$11,325	\$13,375
< \$50.01m – 75m	\$13,325	\$15,875
< \$75.01m – 100m	\$17,325	\$20,375
< \$100.01m – 300m	\$29,825	\$34,750
< \$300.01m – 500m	\$42,825	\$50,250
>\$500.01m	\$73,575	\$87,875
Reinstatement Fee <sup>(5)</sup>	\$100	\$150

<b>Attachment Product Manufacturers <sup>(A)</sup></b>	<b>Members</b>	<b>Non-Members</b>
Annual Participation Fee	\$2,650	\$3,750
Per Label Fee for Attachment Products <sup>(3)</sup>		
boxed/packaged in rolls ≤ 10 lineal feet	\$0.011	\$0.011
boxed/packaged in rolls >10 lineal feet	\$0.055	\$0.055
Annual Per Product Line Fee <sup>(4)</sup>	\$145	\$200
(up to 50 product lines)	(\$7,250 max)	(\$10,000 max)
Reinstatement Fee <sup>(5)</sup>	\$100	\$150

<b>Glazing Suppliers <sup>(6)</sup></b>	<b>Members</b>	<b>Non-members</b>
Annual Participation Fee for Glazing Suppliers <sup>(7)</sup>	\$3,875	\$4,375
Annual Per Product Fee <sup>(8)</sup>	\$82.50	\$137.50

<b>Applied Film Glazing Suppliers <sup>(6)</sup></b>		
Annual Participation Fee for Applied Film <sup>(7)</sup>	\$1,850	\$2,400
Annual Per Product Fee <sup>(8,9)</sup> (up to 100 products)	\$115 (\$11,500 max annually)	\$170 (\$17,000 max annually)

<b>Site-Built Licensees <sup>(10)</sup></b>	
Participation Fee (per project) <sup>(11)</sup>	\$250
Label Certificate Fees (per project) Certified Site-Built Fenestration Area	
≤1000 ft <sup>2</sup>	\$25
≥1001 to 10,000 ft <sup>2</sup>	\$200
≥10,001 to 50,000 ft <sup>2</sup>	\$1000
≥50,001 to 100,000 ft <sup>2</sup>	\$2,000
>100,000 ft <sup>2</sup>	\$3,000

**Notes:**

- (1) For manufacturers not associated with Applied Films and licensed under the NFRC Certification Program.
- (2) A Small Business shall be defined as a company with annual gross sales of fenestration and/or attachment products of \$2 million or less. Manufacturers wishing to participate in the Small Business Program shall provide NFRC with a letter of affidavit that the annual gross sales of fenestration products of their company are \$2 million or less. This shall be confirmed on an annual basis.
- (3) Based on the number of labeled boxes/packages containing an Applied Film product.
- (4) Based on the number of Product Lines authorized for certification by the manufacturer's IA and listed on Schedule II of the manufacturer's License Agreement with NFRC.
- (5) A reinstatement fee shall be assessed to reactivate suspended manufacturer's product lines.
- (6) Suppliers of spectral data files for use in determining NFRC U-factor, Solar Heat Gain Coefficient, Visible Transmittance, and/or Condensation Resistance ratings. This fee is for maintaining NFRC approved spectral data residing in the Lawrence National Laboratory's International Glazing Database (IGDB).

- (7) Annual Participation fee for the Spectral Data Approval Program does not apply to Attachment Product Manufacturers.
- (8) Based on the number of spectral data files provided by the glazing suppliers and Attachment Product Manufacturers and authorized for use to determine U-factor, Solar Heat Gain Coefficient, Visible Transmittance, and Condensation Resistance ratings.
- (9) For film manufacturers, one product is comprised of the three required spectral data files provided and authorized for use to determine Solar Heat Gain Coefficient and Visible Transmittance of the applied film product.
- (10) Responsible Party licensed under the NFRC Certification Program for Site-Built products.
- (11) For the site built program and the CMA program, this fee is assessed on a per project basis, and allows for the printing (by others) of an unlimited number of NFRC Label Certificates. The fee is based on square footage of fenestration product area authorized for certification.
- (A) Only for Applied Film manufacturers licensed under the NFRC Certification Program.

**2.1 Request for Exemption / Extension**

An NFRC Participant may make a request to NFRC for the grant of an exemption from compliance or for an extension of time to achieve compliance with a specific requirement with an NFRC Technical or Program Document applicable to that licensee.

The following fee will be access:

Exemption / Extension Request	\$250 /Request
-------------------------------	----------------

NOTE: This fee is not applicable to a six-month extension certification authorization request in accordance with the recertification of a product line.

### 3. NFRC 702 CERTIFICATION AGENCY PROGRAM (CAP) FEES

#### IA Licensing Application and Initial Inspection

Initial Application Processing (non-refundable)	\$550
Initial Inspection Fee <sup>(1)</sup>	\$1,100/day plus expenses

#### IA Licensing and Periodic Review Fees

Initial Licensing Prorated Fee (one location)	\$8,000
Annual IA Licensing Fee <sup>(2)</sup>	\$9,000 <sup>(3)</sup>
Annual IA Workshop Fee	\$300/licensee <sup>(4)</sup>
Additional Days of Periodic Review as required	\$1,100/day plus expenses <sup>(5)</sup>
Additional Periodic Reviews other than Regularly Scheduled Periodic Review	\$1,100/day plus expenses <sup>(6)</sup>

**Notes:**

- (1) Inspection conducted to determine compliance with requirements for initial licensing (maximum of 2 days). Travel and related inspection expenses billed at cost.
- (2) Annual fee includes review of application for renewal of licensing. A renewal application shall indicate any changes of previous year application.
- (3) Licensing fee for program participation. This figure also includes all labor, travel, and related expenses for one annual on-site periodic review (two days) and one annual in-plant inspection (one day).
- (4) Annual IA workshop attendance to three workshops held annually via Webinar (or equivalent), approximately 3-4 weeks after each scheduled NFRC Membership Meeting by the Individual-in-Responsible Charge. In the event of an on-site workshop, this fee maybe adjusted.
- (5) Fees for any additional days needed during the annual on-site IA periodic review (beyond two days) or additional days needed for annual in-plant inspections (beyond one day).
- (6) On-Site or online periodic reviews, announced or unannounced, that are deemed necessary by the Certification Policy Committee.

## 4. NFRC 701 LABORATORY ACCREDITATION PROGRAM (LAP) FEES

### NFRC Certified Simulator

Certified Simulator Training Workshop <sup>(1)</sup>	\$2,200/person
Annual Maintenance Fee - NFRC Certified Simulator	\$100 <sup>(2)</sup>

### Laboratory Accreditation Application and Inspection

Initial Laboratory Application Processing (non-refundable)	\$550
Initial Test or Simulation Laboratory Inspection Fee	\$1,100/day plus expenses

### Testing Laboratory Accreditation <sup>(3)</sup>

Initial Accreditation Prorated Fee (one location)	\$7,000
Annual Accreditation Fee (one location) <sup>(4)</sup>	\$7,900 <sup>(5)</sup>
Annual Accreditation Fee (each additional location) <sup>(4)</sup>	\$4,050 <sup>(5)</sup>
Additional Days Periodic Review as required	\$1,100/day plus expenses <sup>(6)</sup>
Annual Laboratory Workshop Fee	\$300/lab <sup>(7)</sup>
Additional Periodic Reviews other than Regularly Scheduled Periodic Review	\$1,100/day plus expenses <sup>(8)</sup>

### Simulation Laboratory Accreditation <sup>(9)</sup>

Initial Accreditation Prorated Fee (one location)	\$3,000
Annual Accreditation Fee <sup>(4)</sup>	\$3,500 <sup>(10)</sup>
Annual Accreditation Fee (each additional location) <sup>(4)</sup>	\$1,850 <sup>(10)</sup>
Additional Days Periodic Reviews as required	\$1,100/day plus expenses <sup>(11)</sup>
Annual Laboratory Workshop Fee	\$300/lab <sup>(7)</sup>
Additional Periodic Reviews other than Regularly Scheduled Periodic Review	\$1,100/day plus expenses <sup>(8)</sup>

**Notes:**

- (1) Required prior to achieving simulation laboratory accreditation.
- (2) To maintain your NFRC Certified Simulator status, annual participation in the Inter-Laboratory Comparison test is required. This fee is waived for the first two certified simulators for each accredited laboratory.
- (3) Inter-Laboratory Comparison testing participation is required annually. All laboratories accredited outside the United States and Canada shall pay ILC shipping costs.
- (4) Annual fee includes review of application for renewal of accreditation. A renewal application shall indicate any changes of previous year application.
- (5) This fee includes all labor, travel and related expenses for on-site laboratory periodic review (maximum of 3 days), competence assessment, and the annual Inter-Laboratory Comparison testing (for United States and Canadian labs).
- (6) This fee includes all labor, travel, and related expenses and is assessed if annual periodic review inspection exceeds three days.
- (7) This fee includes attendance to three workshops held annually via Webinar (or equivalent), approximately 3-4 weeks after each scheduled NFRC Membership Meeting. In the event of an on-site workshop, this fee maybe adjusted.
- (8) On-Site or online periodic reviews, announced or unannounced, that are deemed necessary by the Accreditation Policy Committee.
- (9) Technical evaluations and Inter-Laboratory Comparison participation are required annually.
- (10) This fee includes all labor, travel and related expenses for on-site laboratory periodic review, if required (maximum of 2 days), competence assessment, and technical evaluation.
- (11) This fee includes all labor, travel, and related expenses and is assessed if annual periodic review inspection exceeds two days.

## 5. NFRC 705 COMPONENT MODELING APPROACH PRODUCT CERTIFICATION PROGRAM (CMA PCP) FEES<sup>1</sup>

Spacer	Members	Non-Members
Annual Participation Fee <sup>(1)</sup>	\$2,650	\$3,750
Annual Per Component Fee (Path I)	\$30 (\$3,000 max annually)	\$60 (\$6,000 max annually)
Annual Per Component Fee (Path II & Path III)	\$60 (\$6,000 max annually)	\$100 (\$10,000 max annually)

### Frame

Annual Participation Fee <sup>(1)</sup>	\$2,650	\$3,750
Annual Per Component Fee	\$15 (\$13,750 max annually)	\$30 (\$20,000 max annually)

### CMA Label Certificate <sup>(2)</sup>

Label Certificate Fees (per project) Certified Project Size (Fenestration Area)		
≤1000 ft <sup>2</sup>	\$20	\$30
≥1001 to 10,000 ft <sup>2</sup>	\$100	\$150
≥10,001 to 50,000 ft <sup>2</sup>	\$500	\$750
≥50,001 to 100,000 ft <sup>2</sup>	\$1,000	\$1,500
>100,000 ft <sup>2</sup>	\$1,500	\$2,250

### Notes:

- (1) Annual participation fees will cover all areas of participation. That is, multiple participation fees will not be charged if a company participates in more than one area of the CMA Product Certification Program (e.g., a company that submits both frame and glazing components)
- (2) To be paid by Specifying Authority.

## 6. NFRC 708 CALCULATION ENTITY APPROVAL PROGRAM (CEAP OR “ACE PROGRAM”) FEES

Approved Calculation Entity	Members	Non-Members
Annual Participation Fee - Manufacturer / Other ACE (includes unlimited use of CMAST)	\$3,500	\$5,000
Annual Participation Fee – NFRC Accredited Laboratory (includes unlimited use of CMAST for one location)	\$1,000	\$2,000
Annual Participation Fee – NFRC Accredited Laboratory (includes unlimited use of CMAST for each additional location)	\$500	\$1,000
Annual Maintenance Fee - ACE <sup>(2)</sup>	\$100	\$200
Initial Application Fee	\$550	\$550
Onsite Inspection Fee (as required) <sup>(1)</sup>	\$1,100/day plus expenses	\$1,100/day plus expenses
Workshop/Webinar Fees	Established to cover costs	Established to cover costs

**Notes:**

- (1) On-Site or online periodic reviews, announced or unannounced, that are deemed necessary by the Accreditation Policy Committee.
- (2) To maintain your NFRC ACE status, annual participation in the Interlaboratory Comparison test is required. This fee is waived for the first two ACEs for each ACE organization.

---

## 7. CMA SOFTWARE USAGE FEES

---

Applicable to a General user (manufacturer, supplier, contractor, architect, etc.):

<b>CMA Software Usage Fees <sup>(1)</sup></b>	<b>≤25 Users</b>	<b>&gt;25 Users</b>
Initial Software License Fee	\$500	\$500
Initial Additional License Fee (per user) <sup>(2)</sup>	\$125	\$100
Annual Maintenance Software License Fee	\$250	\$250
Annual Maintenance Additional License Fee (per user) <sup>(2)</sup>	\$25	\$15

**Notes:**

- (1) Initial 6-month free trial-period for company upon approval of first registered user of the software.
- (2) Discount offered to companies that have more than 25 licensed users.

---

## 8. NFRC 706 PARTICIPATION IN IG CERTIFICATION PROGRAM

---

### Participation Fee

Initial and Annual Participation Fee	\$500
--------------------------------------	-------