

## **NFRC Doc revisions Dynamic Attachments for Swinging Doors**

Dave De Block - Chair

as of November 26, 2007

The second draft contained adding Dynamic Attachments to Swinging Doors changing “entry” to “swinging” doors.

This is third draft based the TG conference call on 11/26/2007.

### **NFRC 600 Glossary and Terminology: – NFRC Staff liaison: R. McGowan**

(Preceding Dynamic Glazing Products)

**Dynamic Attachment for Swinging Door Product:** Any dynamic glazing in an attachment product that can be attached to a fixed glazed swinging door system to change the thermal performance properties including U-factor, SHGC, and VT. This includes but is not limited to shading systems protected by the glazing layers.

### **NFRC PCP – WG: J. Jonely, J. McFee, S. Strawn, and D. DeBlock**

– NFRC Staff liaison: J. McCracken

Add to **PCP Glossary of Terms 2.1**; Dynamic Attachment for Swinging Doors: see “Dynamic Attachment for Swinging Doors” – The meaning set forth and described in the NFRC Glossary and Terminology.

Add to 6.4 Temporary Certification labels

6.4.5 Dynamic Attachment for Swinging Door Temporary Labels for Attached Products for swinging doors shall include U factor, SHGT, and VT ratings for their full open and closed positions if the appropriate ratings have been obtained. The word variable shall appear on the temporary label if the product has the ability to operate in the intermediate states (see Appendix B, Figure B-X).

6.5 Permanent Certificate Labels.

Dynamic Attachments for Swinging Doors meet the requirements of section 6.5

### **NFRC CAP: – NFRC Staff liaison: J. McCracken (CPC)**

Glossary of Terms page 3

The NFRC 2007 CAP revised in July does not contain any definitions and reference the NFRC 600.

### **NFRC LAP: – NFRC Staff liaison: S. Hanlon (APC)**

Definitions (ref. “Attachment Product:” page 5)

The NFRC 2008 LAP will not contain any definitions and will reference the NFRC 600.

**NFRC 100-2004 – WG: J. Baker, M. Thoman, J. Larsen, and D. DeBlock  
– NFRC Staff liaison: S. Hanlon**

Proposed changes

**2.1 Products covered** add: Dynamic Attachment for Swinging Doors to as (J.)

**3. Definitions.** (Preceding Dynamic Glazing Products)

Add **Dynamic Attachment for Swinging Door Product:** Dynamic Attachment for Swinging Door Product: Any dynamic glazing in an attachment product that can be attached to a fixed glazed swinging door system to change the thermal performance properties including U-factor, SHGC, and VT. This includes but is not limited to shading systems protected by the glazing layers.

**5.7 Variations from the general requirements**

Add: section 5.7. Combination Fenestration Dynamic Attachment for Swinging Door Products. Rating procedures for full glazed swinging doors shall be used with and without the dynamic attachment.

**5.7.1 Scope**

This section presents additional details specific to Dynamic Attachments for Swinging Doors. This section presents and references methods for determining specific Dynamic Attachments for Swinging Doors U-factor rating.

**5.7.2 Methodology** for rating Full Light Swing Doors can be found in Section 5.2

Swinging Doors. Dynamic Attachment swinging Door products will be rated using reference Swinging Doors. See table 5.7.x and figures 5.7.y and z

**5.7.3 Approved Computational Program** The Dynamic Attachment for Swinging Door Product U-factor shall be determined using approved glazed entry door simulation The Dynamic Attachment for Swinging Door shall be modeled on the following reference glazing systems with and without the Dynamic Attachment for Swinging Door.

- a. Steel skin door ½” IG Full Lite
- b. Fiberglass skin Door ½” IG Full Lite

**NFRC 200-2004 – WG: J. Baker, M. Thoman, J. Larsen, and D. DeBlock  
– NFRC Staff liaison: S. Hanlon**

Proposed changes

Add Dynamic Attachment for Swinging Doors to **Section 2.1.1** (H) Products covered using NFRC 201 Test Procedure for SHGC and VT.

Add Dynamic Attachment for Swinging Doors to **Section 3** definitions.

**Dynamic Attachment for Swinging Door Product:** Any dynamic glazing in an attachment product that can be attached to a fixed glazed swinging door system to change the thermal performance properties including U-factor, SHGC, and VT. This includes but is not limited to shading systems protected by the glazing layers.

## **Add 5.8 Dynamic Attachments for Swinging Doors**

### **5.8.1 Scope**

This section presents additional details specific to Dynamic Attachments for Swinging Doors. This section presents and references methods for determining specific Dynamic Attachments for Swinging Doors Solar Heat Gain Coefficient (SHGC) and Visible Transmittance (VT). Methodology for rating Full Light Swinging Doors can be found in Section 5.2. Dynamic Attachment for Swinging Door products will be rated using reference Swinging Doors outlined in NFRC 100.

### **5.8.2 Approved Computational Program**

The Dynamic Attachment for Swinging Door Product SHGC and VT shall be determined using approved glazed swinging door simulation. The Dynamic Attachment for Entry Door shall be modeled on the following reference glazing systems with and without the Dynamic Attachment for Swinging Doors.

- a. Steel skin door ½" IG Full Lite
- b. Fiberglass skin Door ½" IG Full Lite

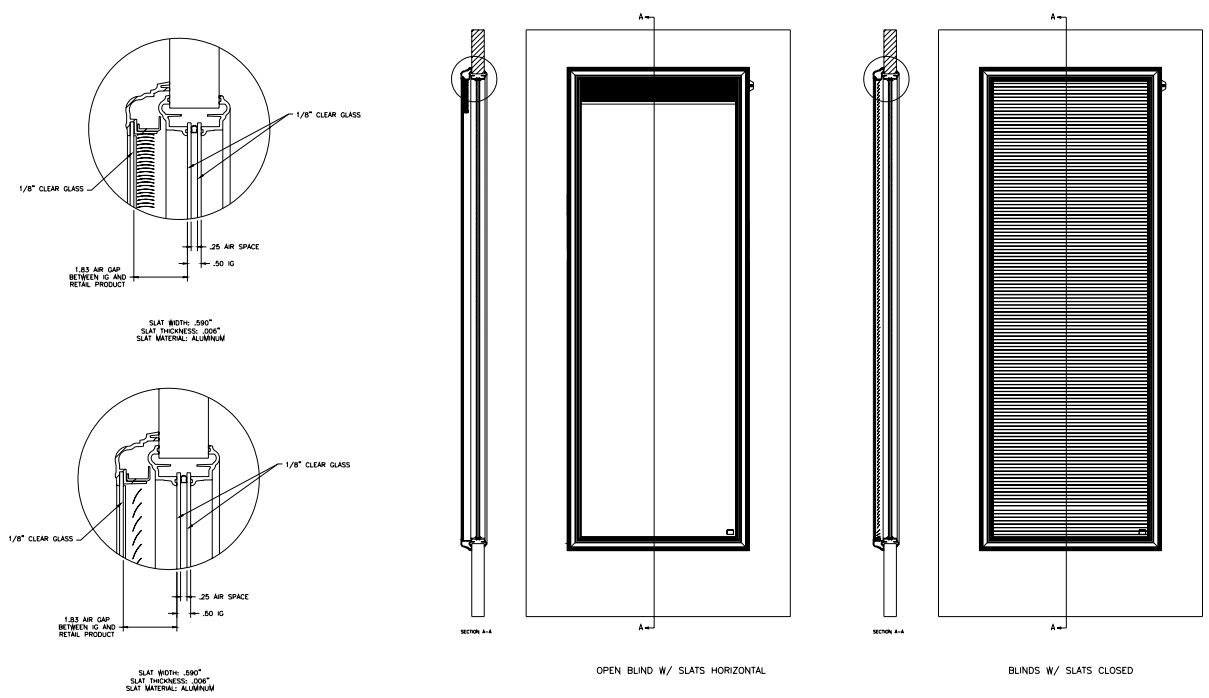
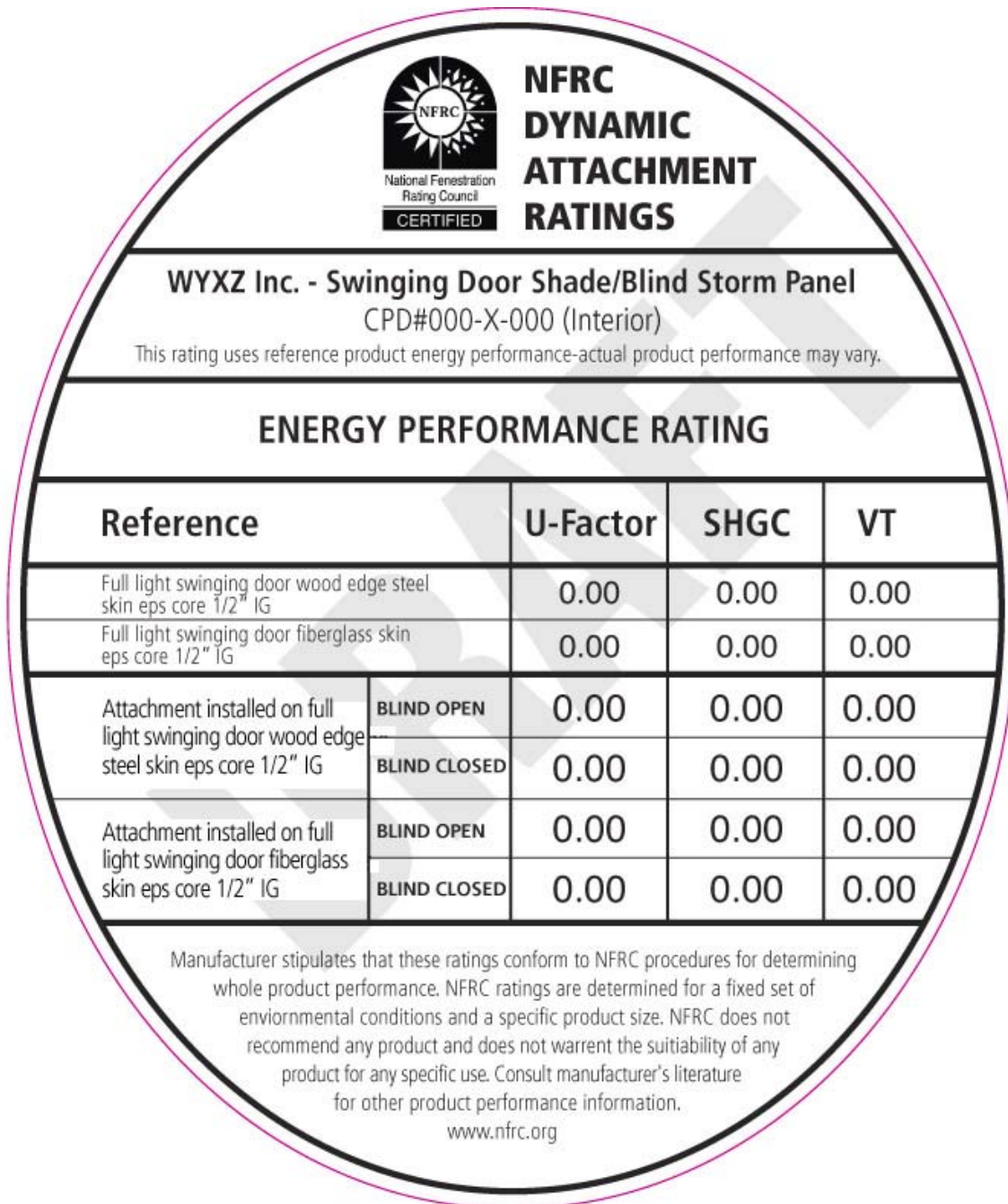


Figure a. Steel skin door 1/2" IG Full Lite  
**Figure 8 b. Fiberglass skinned Door 1/2" IG Full Lite**

**NFRC PCP Appendix B**

**Figure B-x**  
Sample Temporary Label for Dynamic Attachment Products



The dynamic attachment label shall indicate as shown above the reference product it is attached to as well as the “Interior” or “Exterior” location of the attachment