

# **NFRC Doc revisions Dynamic Attachments for Swinging Doors**

Dave De Block

July 25, 2007

Find the second draft following of proposed NFRC document changes adding Dynamic Attachments to Swinging Doors changing “entry” to “swinging” doors.

## **NFRC PCP**

**NFRC Glossary and Terminology** (Preceding Dynamic Glazing Products)

Dynamic Attachment for Swinging Door Product: Any dynamic glazing attachment product that can be attached to a fixed glazed swinging door system to improve the thermal performance properties including U-factor, SHGC, and VT. This includes but is not limited to shading systems protected by the glazing layers.

Add to **PCP Glossary of Terms 2.1**; Dynamic Attachment for Swinging Doors: see “Dynamic Attachment for Swinging Doors” – The Meaning set forth and described in the NFRC Glossary and Terminology.

Add to 6.4 Temporary Certification labels

6.4.5 Dynamic Attachment for Swinging Door Temporary Labels for Attached Products for swinging doors shall include U factor, SHGT, and VT ratings for their full open and closed positions if the appropriate ratings have been obtained. The word variable shall appear on the temporary label if the product has the ability to operate in the intermediate states (see Appendix B, Figure B-X).

6.5 Permanent Certificate Labels.

Dynamic Attachments for Swinging Doors meet the requirements of section 6.5

**NFRC CAP**: Glossary of Terms page 3

Add Dynamic Attachment for Swinging Doors: see “Dynamic Attachment for Swinging Doors” – The Meaning set forth and described in the NFRC Glossary and Terminology.

**NFRC LAP**: Definitions (ref. “Attachment Product:” page 5)

Add Dynamic Attachment for Swinging Doors: Any fenestration product, which is added as a retrofit attachment with dynamic functionality to an existing Swinging Door system.

**NFRC 100-2004** Proposed changes

**2.1 Products covered** add: Dynamic Attachment for Swinging Doors to as (J.)

**3. Definitions.** (Preceding Dynamic Glazing Products)

Add Dynamic Attachment for Swinging Door Product: Any dynamic glazing attachment product that can be attached to a glazed entry door system to improve the thermal performance properties including U-factor, SHGC, and VT.

This includes but is not limited to shading systems protected by the glazing layers.

### **5.7 Variations from the general requirements**

Add: section 5.7. Combination Fenestration Dynamic Attachment for Swinging Door Products.

Rating procedures for full glazed swinging doors shall be used with and without the dynamic attachment.

#### **5.7.1 Scope**

This section presents additional details specific to Dynamic Attachments for Swinging Doors. This section presents and references methods for determining specific Dynamic Attachments for Swinging Doors U-factor rating.

**5.7.2 Methodology** for rating Full Light Swing Doors can be found in Section 5.2 Swinging Doors. Dynamic Attachment swinging Door products will be rated using reference Swinging Doors. See table 5.7.x and figures 5.7.y and z

**5.7.3 Approved Computational Program** The Dynamic Attachment for Swinging Door Product U-factor shall be determined using approved glazed entry door simulation The Dynamic Attachment for Swinging Door shall be modeled on the following reference glazing systems with and without the Dynamic Attachment for Swinging Door.

- a. Steel skin door ½" IG Full Lite
- b. Fiberglass skinned Door ½" IG Full Lite

**NFRC 200-2004** Proposed changes

Add Dynamic Attachment for Swinging Doors to **Section 2.1.1** (H) Products covered using NFRC 201 Test Procedure for SHGC and VT.

Add Dynamic Attachment for Entry Doors to **Section 3** definitions.

Dynamic Attachment for Swinging Doors a fenestration attachment for swinging doors with dynamic thermal properties. Utilize dynamic glazing procedures for simulating and testing in open and closed positions.

**Add 5.8 Dynamic Attachments for Swinging Doors**

5.8.1 Scope

This section presents additional details specific to Dynamic Attachments for Swinging Doors. This section presents and references methods for determining specific Dynamic Attachments for Swinging Doors Solar Heat Gain Coefficient (SHGC) and Visible Transmittance (VT). Methodology for rating Full Light Swinging Doors can be found in Section 5.2. Dynamic Attachment for Swinging Door products will be rated using reference Swinging Doors outlined in NFRC 100.

5.8.2 Approved Computational Program The Dynamic Attachment for Swinging Door Product SHGC and VT shall be determined using approved glazed swinging door simulation. The Dynamic Attachment for Entry Door shall be modeled on the following reference glazing systems with and without the Dynamic Attachment for Swinging Doors.

- a. Steel skin door ½" IG Full Lite
- b. Fiberglass skinned Door ½" IG Full Lite

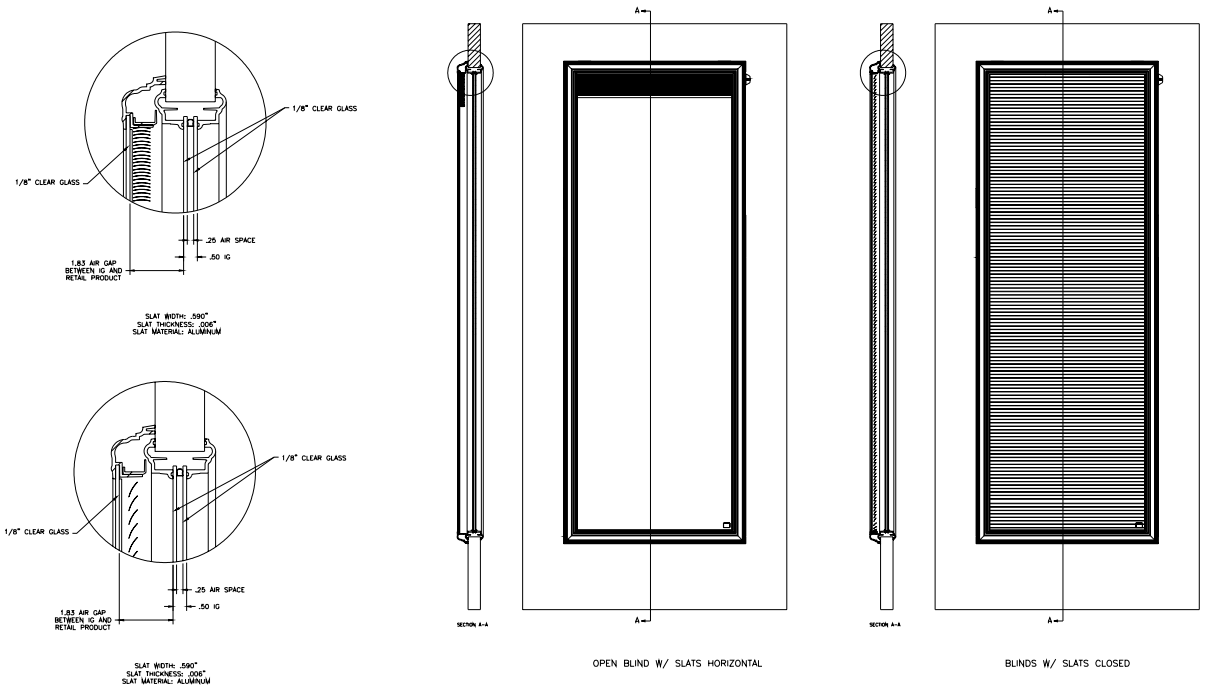



Figure a. Steel skin door 1/2" IG Full Lite  
**Figure 8 b. Fiberglass skinned Door 1/2" IG Full Lite**

**NFRC PCP Appendix B**

**Figure B-x**  
Sample Temporary Label for Dynamic Attachment Products

 <b>NFRC DYNAMIC ATTACHMENT RATINGS</b>				
<b>WYXZ Inc. - Entrance Door Shade/Blind Storm Panel</b> CPD#000-X-000 (Interior) <small>This rating uses reference product energy performance-actual product performance may vary.</small>				
<b>ENERGY PERFORMANCE RATING</b>				
Reference		U-Factor	SHGC	VT
Full light entry door wood edge steel skin eps core 1/2" IG		0.00	0.00	0.00
Full light entry door fiberglass skin eps core 1/2" IG		0.00	0.00	0.00
Attachment installed on full light entry door wood edge steel skin eps core 1/2" IG	BLIND OPEN	0.00	0.00	0.00
	BLIND CLOSED	0.00	0.00	0.00
Attachment installed on full light entry door fiberglass skin eps core 1/2" IG	BLIND OPEN	0.00	0.00	0.00
	BLIND CLOSED	0.00	0.00	0.00
<small>Manufacturer stipulates that these ratings conform to NFRC procedures for determining whole product performance. NFRC ratings are determined for a fixed set of environmental conditions and a specific product size. NFRC does not recommend any product and does not warrant the suitability of any product for any specific use. Consult manufacturer's literature for other product performance information. www.nfrc.org</small>				

The dynamic attachment label shall indicate as shown above the reference product it is attached to as well as the “Interior” or “Exterior” location of the attachment

delete entrance and add swinging to the above label